



History of kowa optronics

VISION  
ENVIRONMENT  
ROBOTICS  
AI

**1894** Founded as a cotton clothfabric wholesaler, "Hattori Kanesaburo Wholesale Store (Yaoya-cho, Nagoya)".

**1968** Sales of lenses for surveillance were started.

**2017** Kokan Techno Co., Ltd. started Environmental Business.

**2023** Acquisition of all shares of Kowa Skymech Pte. Ltd. by KOWA and conversion to subsidiary.

**1946** Kowa Koki was established in Gamagori, Aichi.

Production of spectacle lenses and opera glasses was started, followed by production of 33mm projection lenses (1947) and binoculars (1948).

**1991** Security lenses and FA lenses were successively released, with the aim of promoting global expansion.



**2021** Acquisition of all shares of Kowa Techmake Co., Ltd. by KOWA and conversion to subsidiary.

**2023** Kowa Optronics Co., Ltd. merged with Kokan Techno Co., Ltd. and Kowa TechMake Co., Ltd.

 *Kowa Optronics Co.,Ltd.*

2F Kudan Center Bldg. 4-1-7, Kudan-Kita, Chiyoda-Ku, Tokyo 102-0073, Japan  
Phone: +81(3)5651-7061 Facsimile: +81(3)6380-8036  
E-mail: opt-cctv@kowa.co.jp



<https://optical.kowa-opt.co.jp/e/>

CP-EN\_2312SN-1

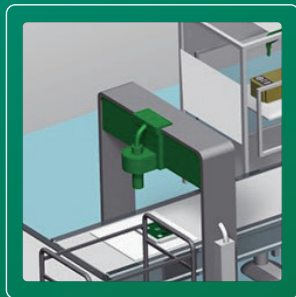
**COMPANY PROFILE**

*Kowa Optronics Co.,Ltd.*

## Optical Division

The vision system we have developed will be the “eyes” for realizing the inspection, measurement and recognition of objects

In-house developed Optical Division provides high performance camera and lens products to customers in every field, contributing to performance improvement.



The Robotics Division identifies issues in manufacturing and distribution sites and implements activities to resolve them from various aspects including production facilities and conveyance equipment, control systems and monitoring systems using robots.

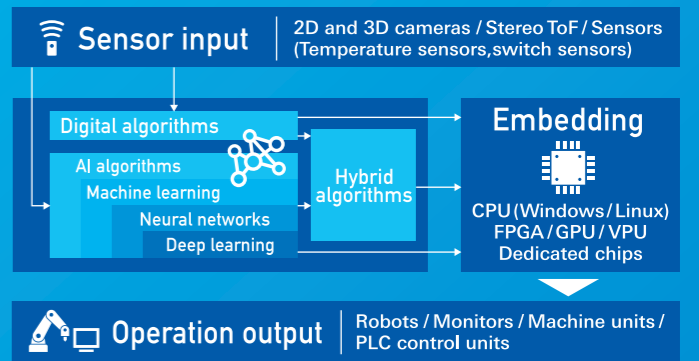
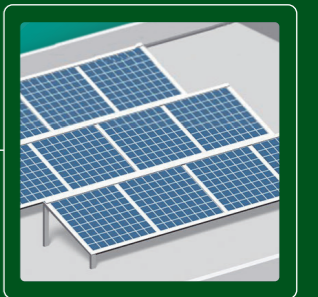
## Robotics Division

Systems integration to be realized through offering proposals for the rationalization and automation of all kinds of processes

## Environment Division

Consulting related to environmental friendly buildings and facilities with the goal of realizing decarbonization

The Environment Division designs and constructs environmental friendly buildings by using energy-saving technologies which apply LED lighting and ICT and IoT technologies together with energy-creating technologies such as solar power generation.



Kowa AI Solutions develops original AI technologies which enhance the inspection, measurement and recognition accuracies to further expand the possibilities of vision systems and robot control.

## Kowa AI Solutions Co., Ltd.

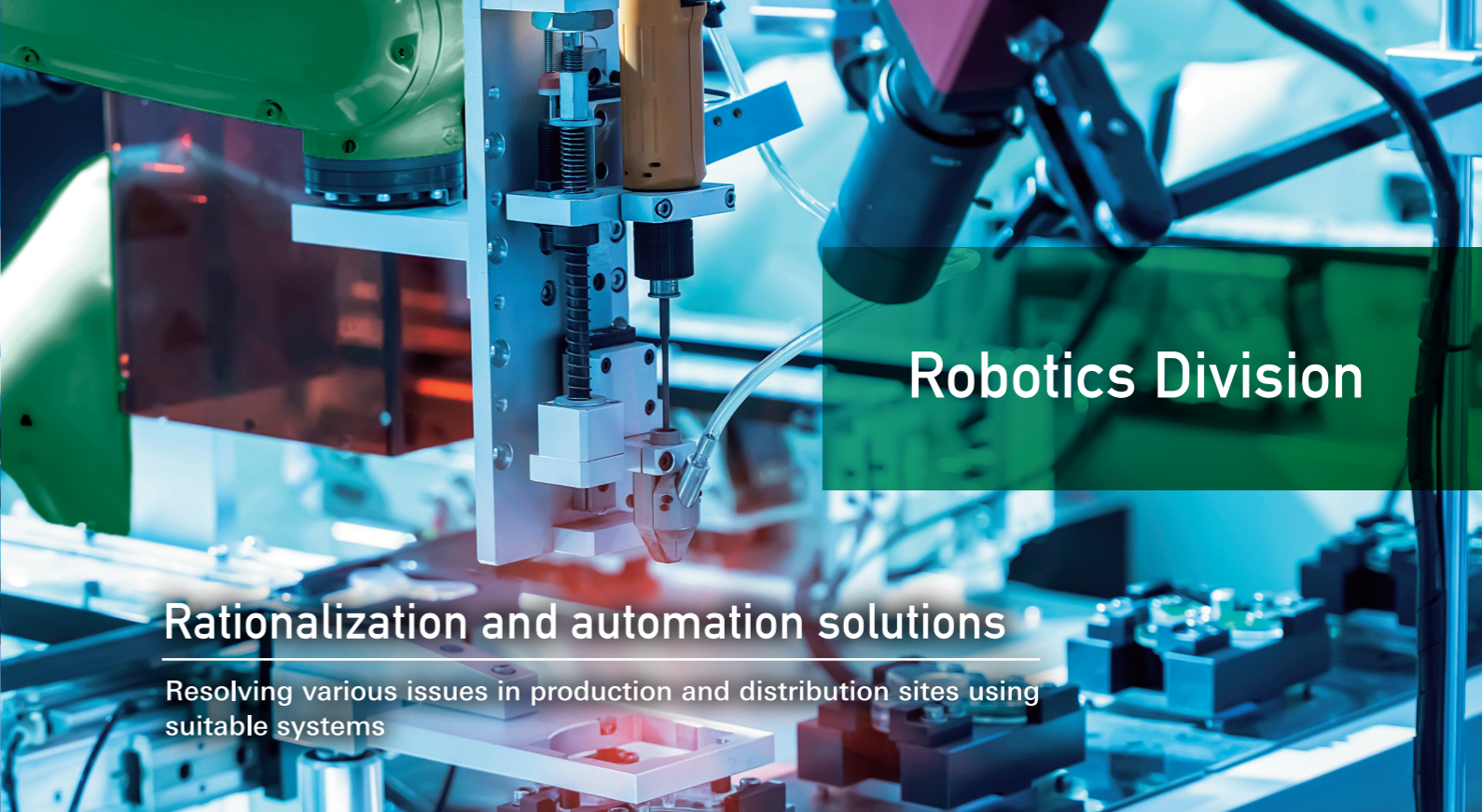
Our in-house developed artificial intelligence technologies that seek the “visualization” of vision systems



## Optical Division

### Vision system solutions

Supporting various vision-related requirements with a wide-ranging product lineup



## Robotics Division

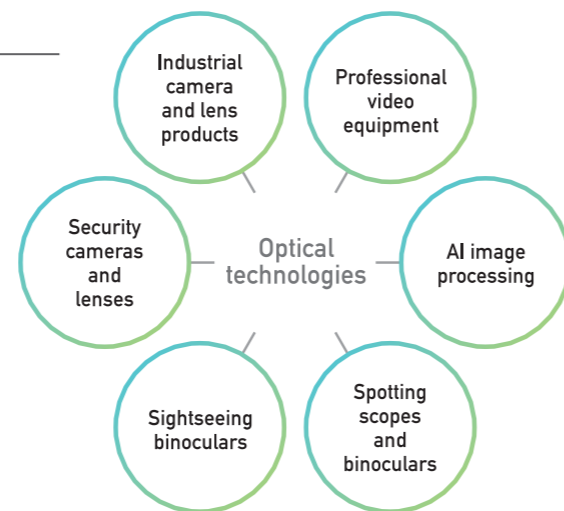
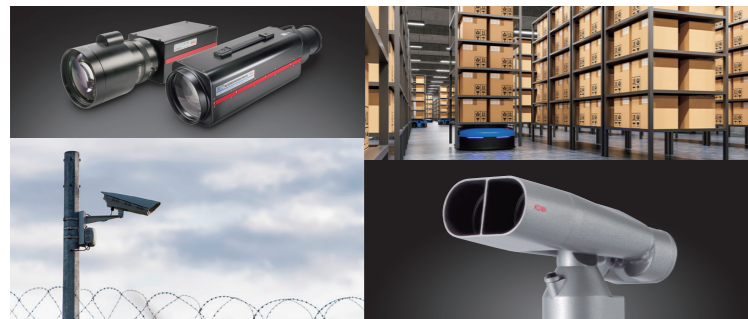
### Rationalization and automation solutions

Resolving various issues in production and distribution sites using suitable systems

## Providing a consistent service for resolving issues using total vision systems

### Extensive vision product groups

Centering around optical technologies with long experiences and achievements, we have been making full use of lens, machinery, electricity and software to develop various vision products. The vision product groups, including those for industrial use, surveillance and personal use, provide advanced experiences for each customer.



### Industrial vision units and vision systems

Featuring an environmental resistance that allows use even under harsh environments, a wide lineup of products is available matching diverse applications in various fields such as factory automation, distribution and retail. Issues facing customers are resolved using total vision systems comprising lenses, cameras and image processing.



### The PROMINAR brand represents the pinnacle of our optical technologies

The optical technologies fostered by us over more than 70 years have culminated in our PROMINAR brand spotting scopes, which are highly regarded by users around the world. Seeking the optimum viewing sensation, these scopes provide "enjoyable viewing" and the "joy of learning".

## Offering digital transformation solutions for production sites and distribution warehouses



### Action as the system integrator

We promote the rationalization and automation of production and distribution sites by actively developing systems driven by industrial robots and vision systems. Further, we make production line simulations and offer digital transformation proposals.



### Offering proposals for production lines which support high-level requirements from users

Based on the experience fostered over many years in constructing production lines including for medical and pharmaceutical products, we provide a wide range of services using various product groups, ranging from the planning and sales of production facilities to the provision of support following their delivery.



## Kowa AI Solutions Co., Ltd.

Image processing and image analyzing solutions

### AI development which functions as the "brain" in systems

In addition to basic image analyses, our in-house developed AI software incorporating advanced technologies such as machine learning and deep learning is used to support the development of systems which respond to the various requirements of customers.

Taking and moving objects	Carriers and devices
Viewing objects	Vision units
Judging objects	Vision processors



# Environment Division

## Energy efficiency and energy creation solutions

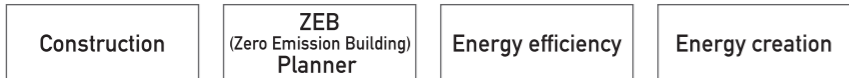
Realizing a sustainable future by combining the "environment" with "engineering"



Supporting the introduction of energy-saving and energy-creating technologies through environment-related business developments

### ZEB(Zero Emission Building) construction business

We support the reduction of CO<sub>2</sub> emissions through the design and construction of environmental friendly buildings by our in-house construction team, which contributes to building a sustainable society.



### Solar power business

In addition to conducting operations and management utilizing our four generating stations, we promote the introduction of green energy using solar power generating facilities which have been introduced in large numbers across Japan.

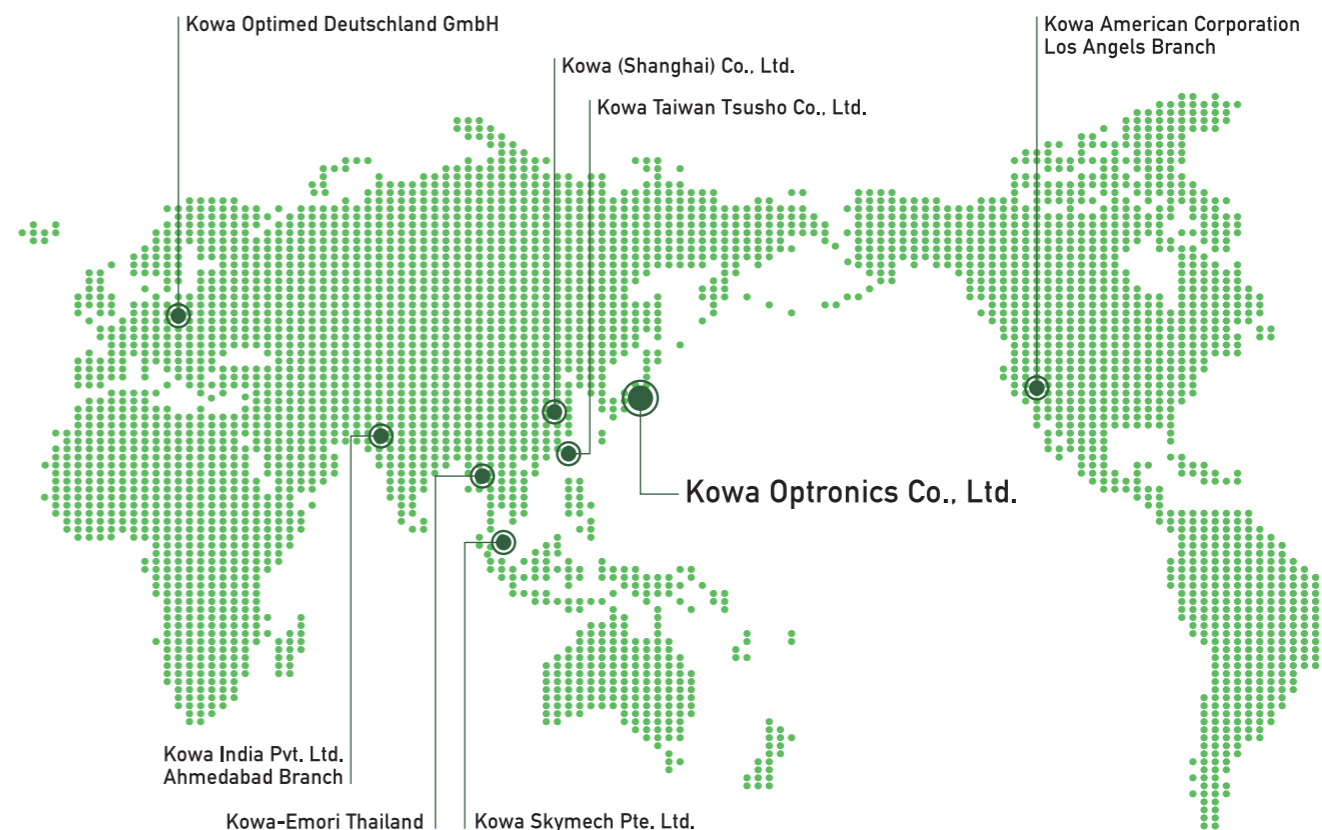


### Environment-related business

We offer proposals that match customer needs such as introducing LED lighting, providing BCP measures using storage cells and EV chargers, and supporting the achievement of low-carbon target values using the J-Credit Scheme.



## Global Network



### Germany

#### Kowa Optimed Deutschland GmbH

Since the early 1980's, Kowa has had a European Sales office. Kowa Optimed Deutschland GmbH serves the European optical market from its high-tech offices in Dusseldorf. A team of dedicated lens professionals provides sales and technical support across the European continent. Not only does the team work in close communication with the optical and technical development division in Japan, but it also has Japanese engineers working in-house and can offer R&D as well as lens customization and efficient after-sales support services to the European market.

Please visit our website for details  
<https://www.kowaoptimed.com/>



### United States

#### Kowa American Corporation L.A. Branch

Kowa American Corporation's Los Angeles branch serves high quality products to North and South American customers, specializing in sporting optics, machine vision lenses, and medical equipment. At the heart of Kowa American Corporation's philosophy lies a commitment to innovation and excellence. The company seamlessly blends state-of-the-art technology, adaptive machinery, sophisticated application software, and the finesse of traditional optical craftsmanship. This harmonious approach culminates in a diverse portfolio of products that are meticulously designed to enhance the visual experience and provide comprehensive vision solutions that cater to a broad range of users.

Please visit our website for details  
<https://www.kowa-usa.com/>



### Singapore

#### Kowa Skymech Pte. Ltd.

Kowa Skymech is a leading robotics integration and industrial automation company that specialises in purpose-built, flexible solutions for manufacturers across industries – including Aerospace, Biomedical, Data Storage, Electronics, Semiconductor, Solar Energy, and more

Please visit our website for details  
<https://www.kowa-skymech.com/>

